

ONUnet - ONU Setup Guide for Windows 8.1

The steps below are designed to help Students, Faculty, and Staff connect to the wireless network at Olivet Nazarene University called ONU on Windows 8.1 (Guests should use ONUGuest).

1. Click on the network icon in the taskbar



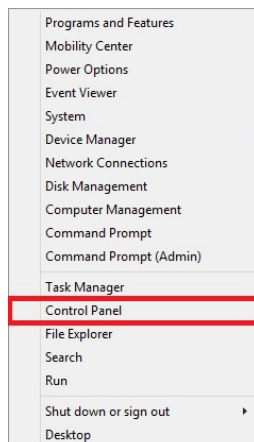
2. Right click on the network you want to remove, then click "Forget Network." Forget all of the following networks: ONU, Solomon, Judah, and ONUGuest.



3. Right click on the Start button

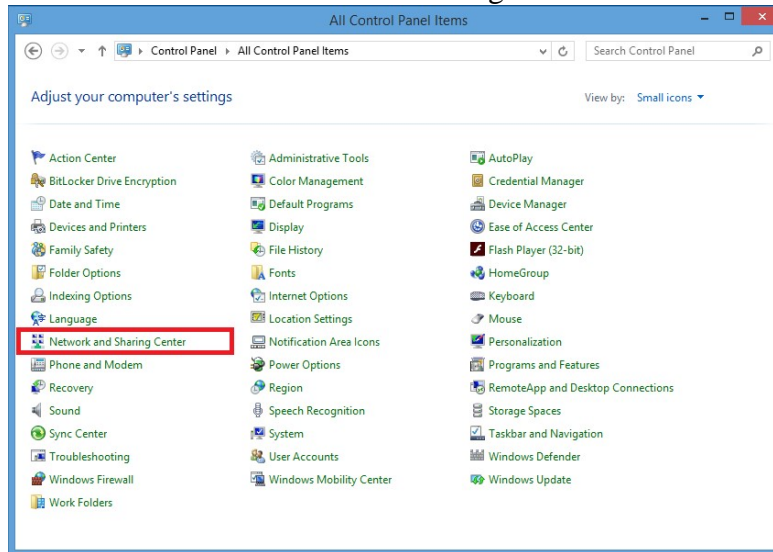


4. Click "Control Panel"

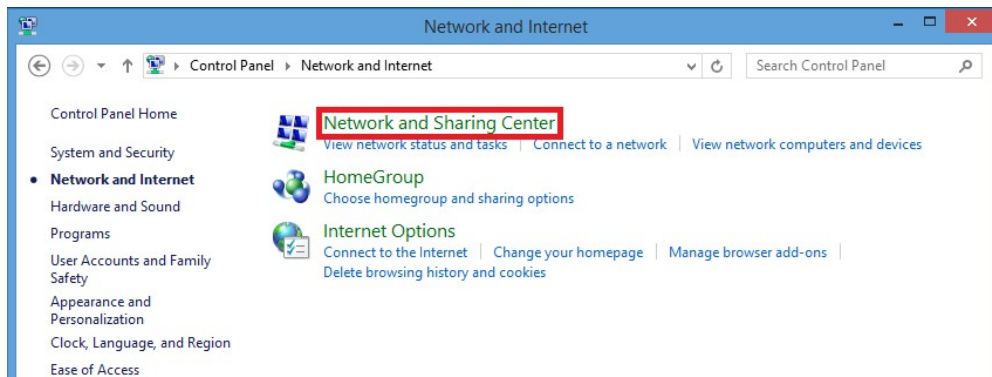
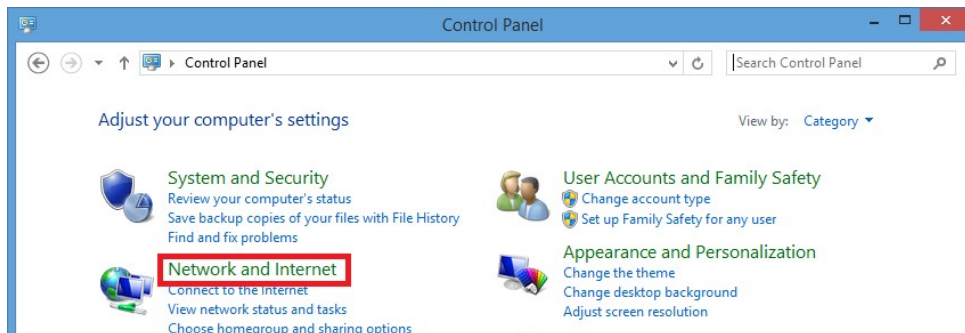


ONUnet - ONU Setup Guide for Windows 8.1

5. Depending on your Control Panel layout, either click "Network and Sharing Center" or click "Network" and then "Network and Sharing Center"

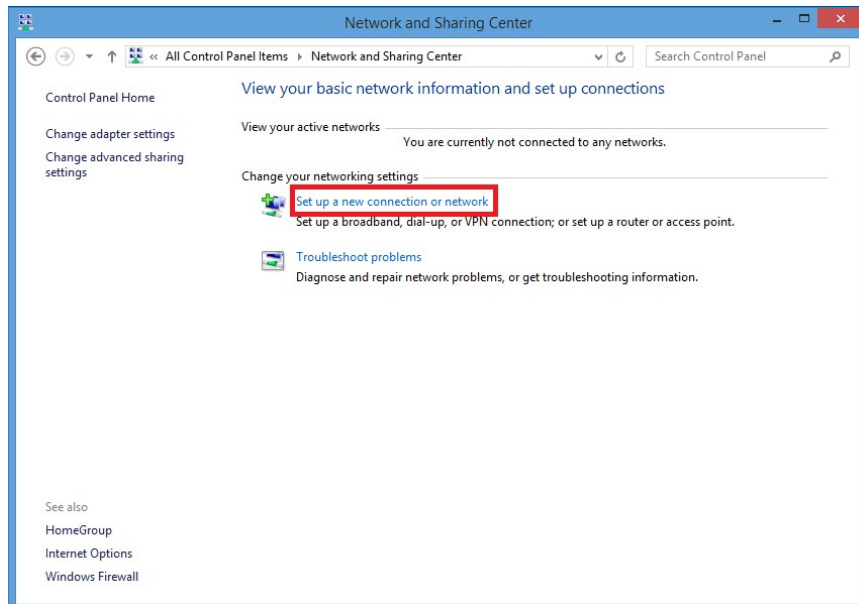


OR

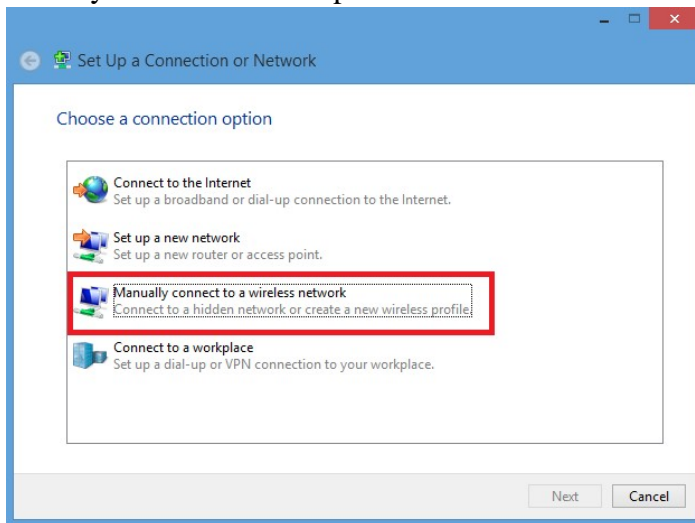


ONUnet - ONU Setup Guide for Windows 8.1

6. Click “Set up a new connection or network”

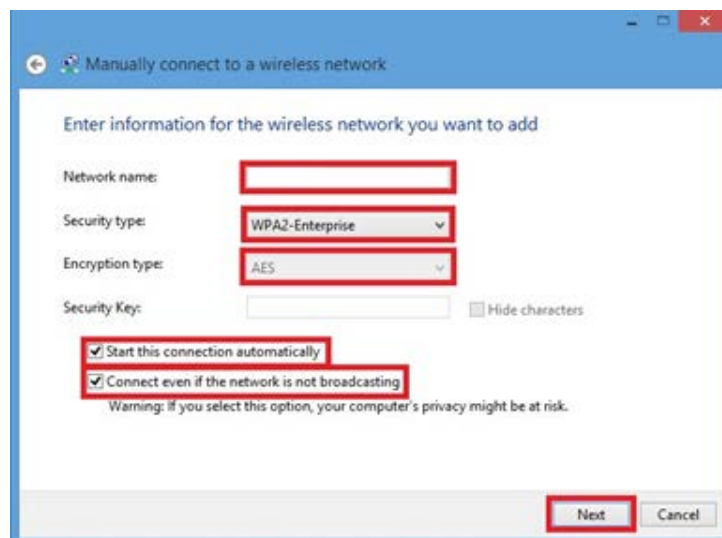


7. Click “Manually create a network profile”



ONUnet - ONU Setup Guide for Windows 8.1

8. Enter the Network name as: “ONU” (make sure to capitalize ONU)
9. Change Security Type to “WPA2-Enterprise”
10. Encryption type should be “AES”
11. Make sure that the checkbox next to “Start this connection automatically” is checked
12. Make sure that the checkbox next to “Connect even if the network is not broadcasting” is checked
13. Click “Next”



14. Click “Change connection settings”

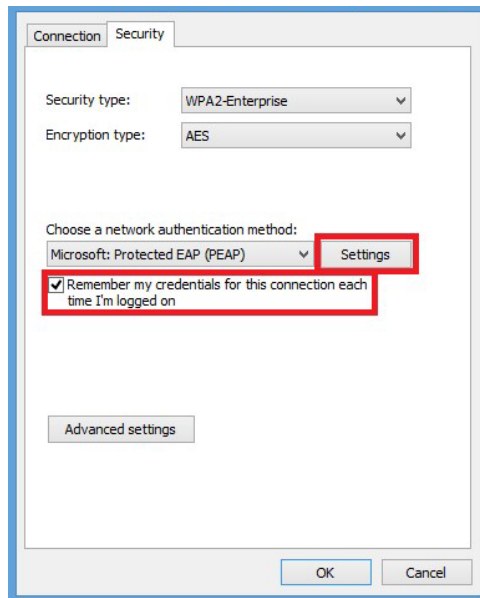


ONUnet - ONU Setup Guide for Windows 8.1

15. Make sure that the checkboxes next to “Connect automatically when this network is in range” and “Connect even if the network is not broadcasting its name (SSID)” are checked, then click the “Security” tab

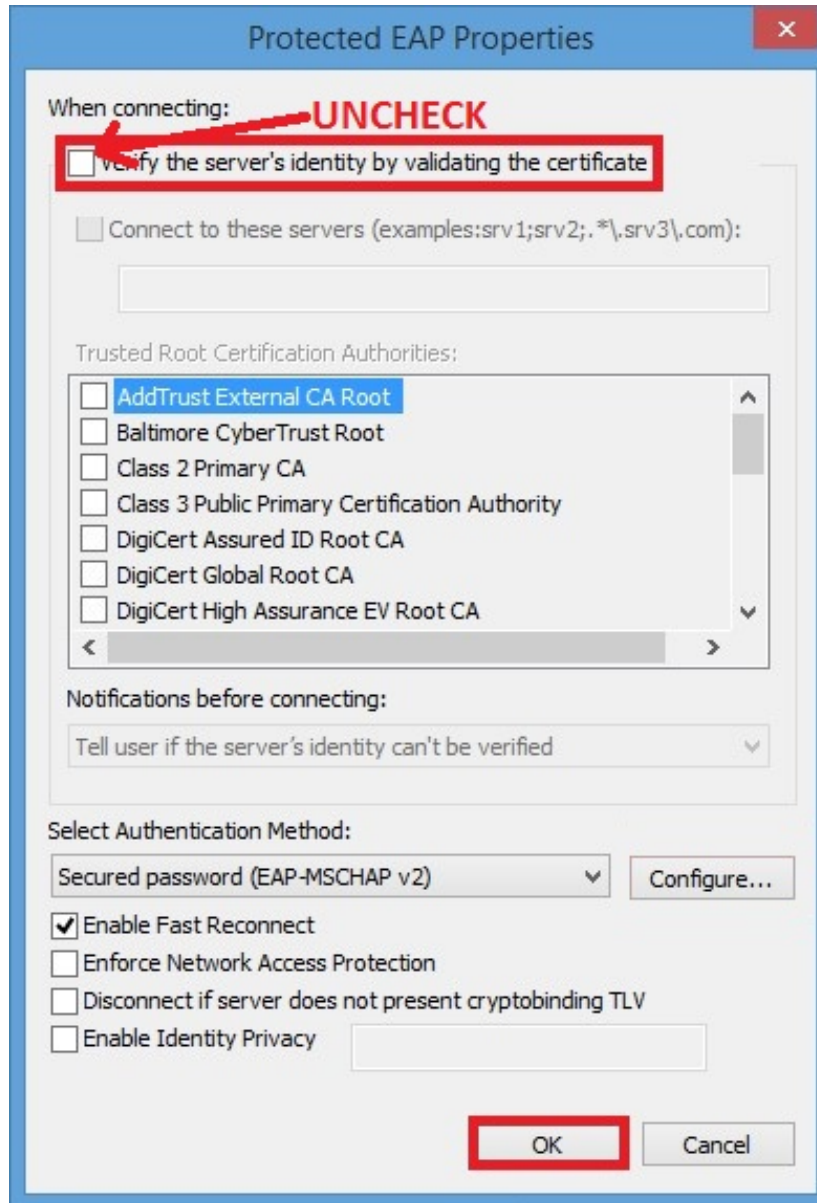


16. Make sure that the checkbox next to “Remember my credentials for this connection each time I’m logged on” is checked, then click the “Settings” button



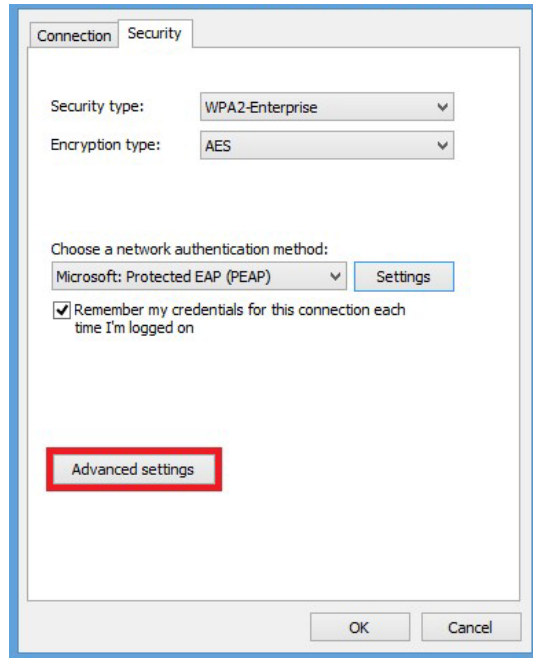
ONUnet - ONU Setup Guide for Windows 8.1

17. Uncheck the “Verify the server’s identity by validating the certificate” checkbox, then click OK.

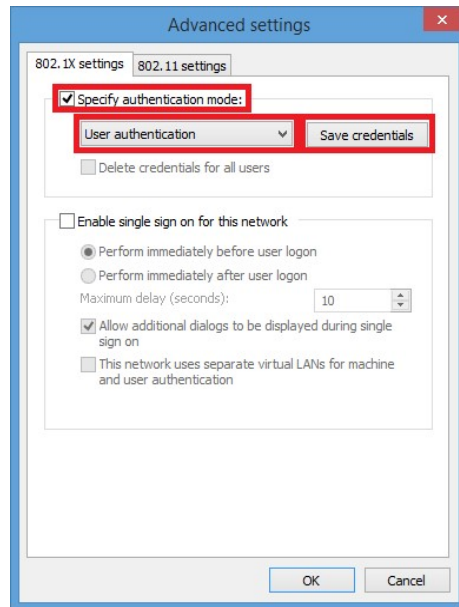


ONUnet - ONU Setup Guide for Windows 8.1

19. Click on the “Advanced Settings” button

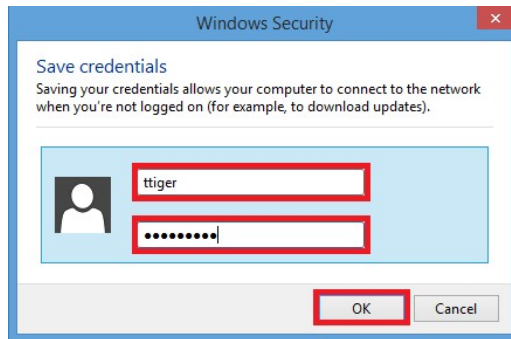


20. Check the “Specify authentication mode:” box
21. Choose “User Authentication”
22. Click “Save credentials”

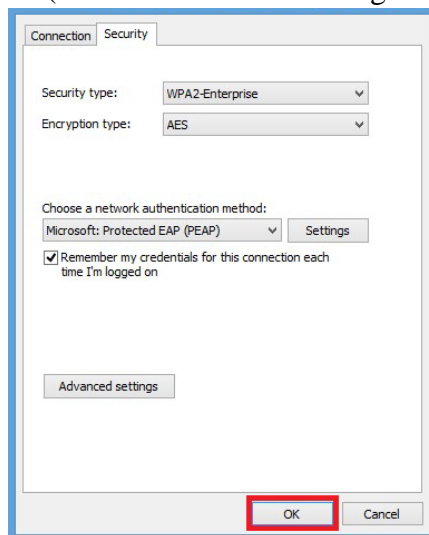


ONUnet - ONU Setup Guide for Windows 8.1

23. Type your ONUnet username and password (do not include"@olivet.edu")
24. Click "OK" (on the "Windows Security" window)



25. Click "OK" (on the "Advanced Settings" window)



26. Click "OK" (on the "ONU Wireless Network Properties" window)
27. Click "Close" (on the "Manually Connect to a Wireless Network" window)
28. Close out of the "Manage Wireless Networks" window
29. Open a Web browser (E.G. Firefox, IE, Chrome) to make sure you are connected

If you need further assistance, contact the IT Help Desk.
Phone: (815) 939-5302 | Email: it@olivet.edu
In person: Lower Level of Benner Library
Online: <http://it.olivet.edu>